



HTO 120

2" x 1-1/2" End Suction Centrifugal Hot Oil Pump

The HTO™ 120 by MP Pumps is purpose-built to deliver exceptional performance in extreme high-temperature applications. Engineered for demanding environments, this pump is ideal for industries such as plastics manufacturing, chemical processing, and food production, where heat transfer fluids must be handled with precision and efficiency.

Key Features & Benefits

- **Optimized for High Temperatures:** Designed to withstand fluid temperatures up to 650°F (343°C), ensuring reliable operation in the most challenging thermal conditions.
- **Advanced Seal Protection:** Innovative design reduces mechanical seal temperature through ambient air cooling, extending seal life and reducing downtime.
- **Durable Construction:** Built from ductile iron with a precision-cast iron impeller for superior strength and long-term reliability.
- **Flexible Installation:** Available in horizontal or vertical mounting configurations, with multiple drive options to meet diverse system requirements.

SPECIFICATIONS:

Suction and Discharge	2" x 1-1/2" NPT or 125# flat flange
Materials of Construction	Ductile iron
Flow	Up to 195 GPM (44.3 m³/h)
Head Feet	Up to 135' (41 m)
Impeller	5.96 (151.38 mm) steel, enclosed
Motor	Up to 5 HP (3.67 kW)
Drive Options	Close coupled 145TC Close coupled 184C Pedestal PumPAK® (without motor)
Seal	Carbon / silicon carbide / Viton
Temperature	650°F (343°C) max
Drive Sleeve	Hardened 303SS

Application:

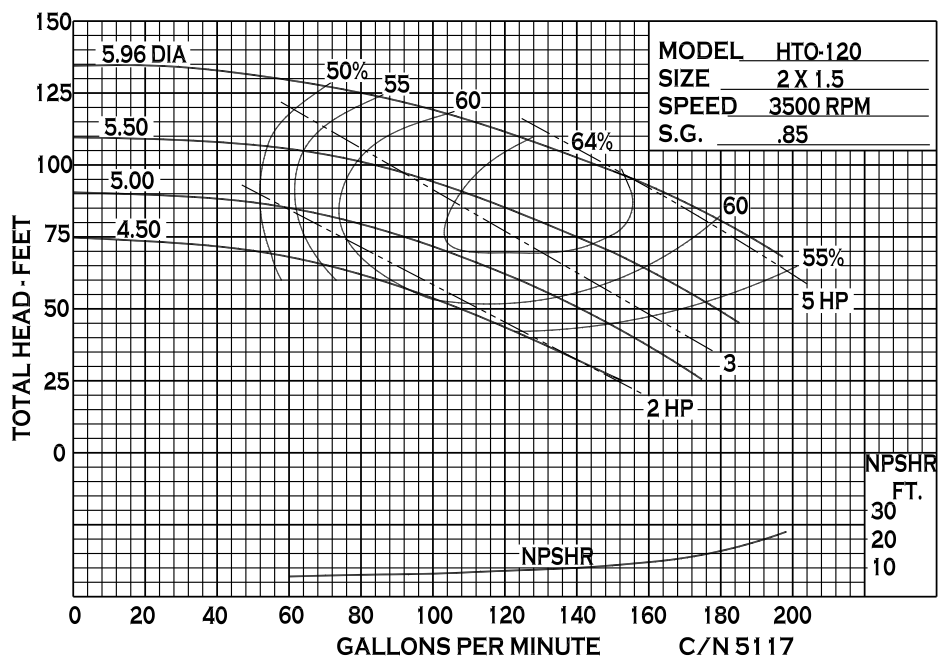
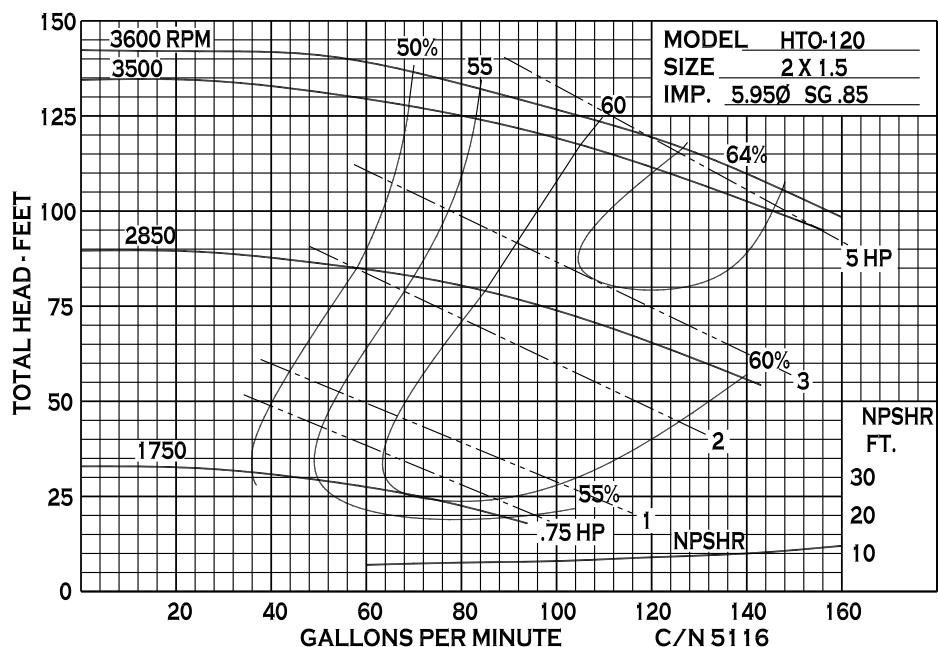
- Industrial
- OEM



An Ingersoll Rand Business

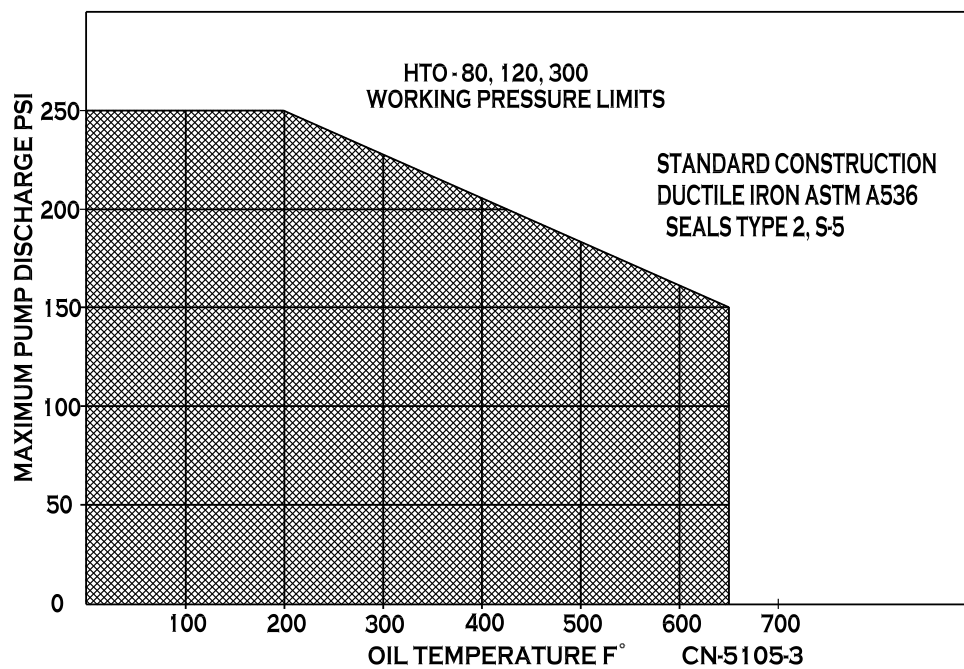
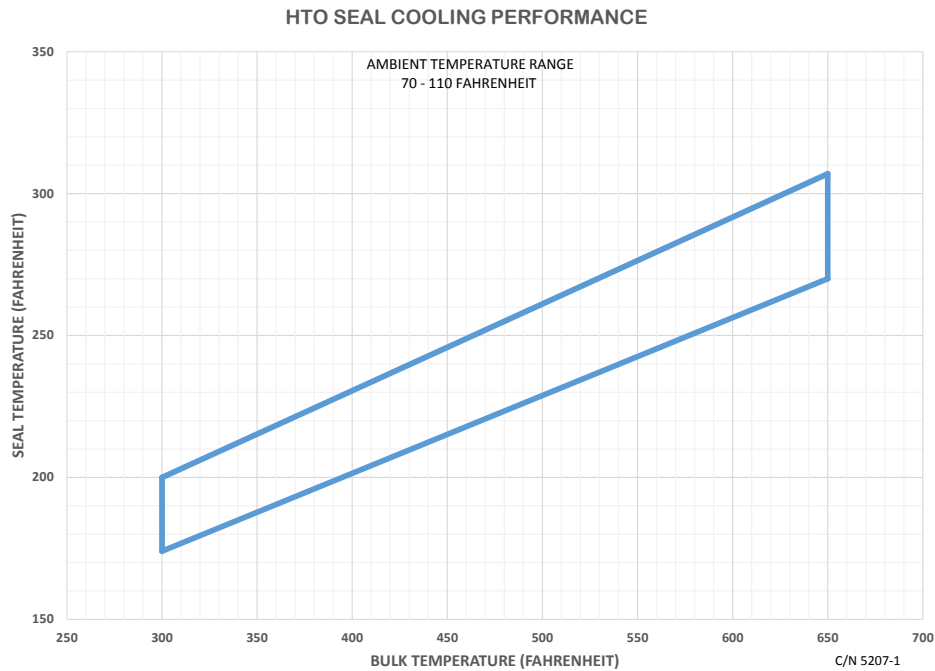
HTO 120

PERFORMANCE CURVES



12500 South Pulaski Road
Alsip, IL 60803, USA
Phone (800) 563-8006

PERFORMANCE CURVES

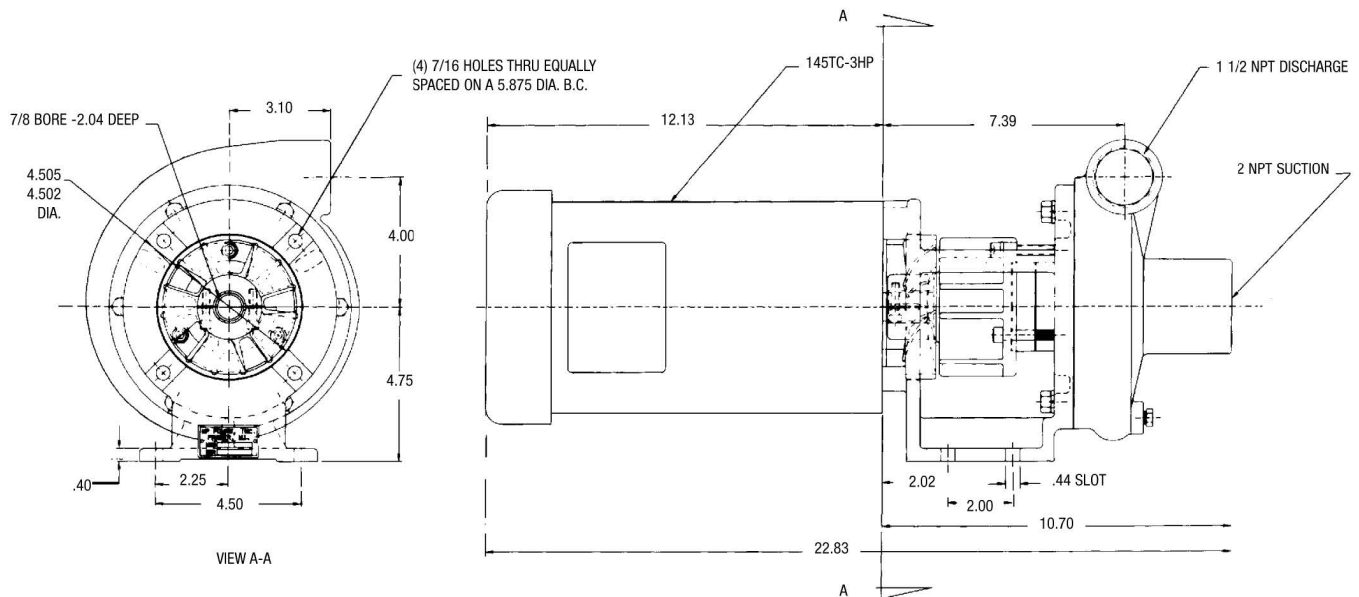




An Ingersoll Rand Business

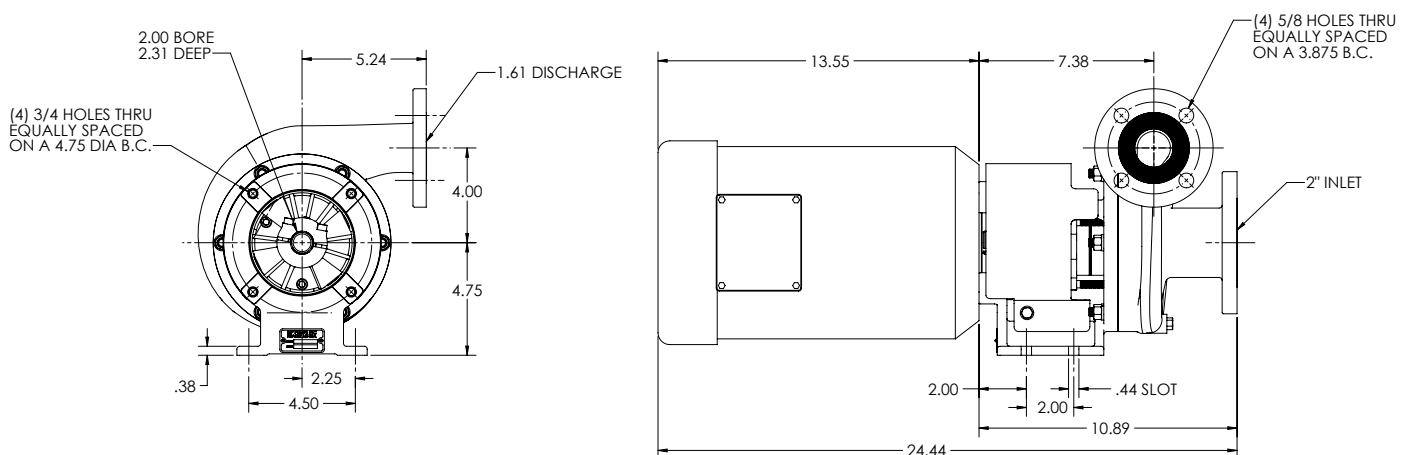
HTO 120

DIMENSIONS



Pump dimensions certifiable for construction purposes.
Motor dimensions dependent upon motor manufacturer.

HTO120PMP D:5-3 184C (MP32065)



* For complete parts lists and troubleshooting guidance, please refer to the MP Pumps Installation Operation & Maintenance (IOM) Manual.



12500 South Pulaski Road
Alsip, IL 60803, USA
Phone (800) 563-8006

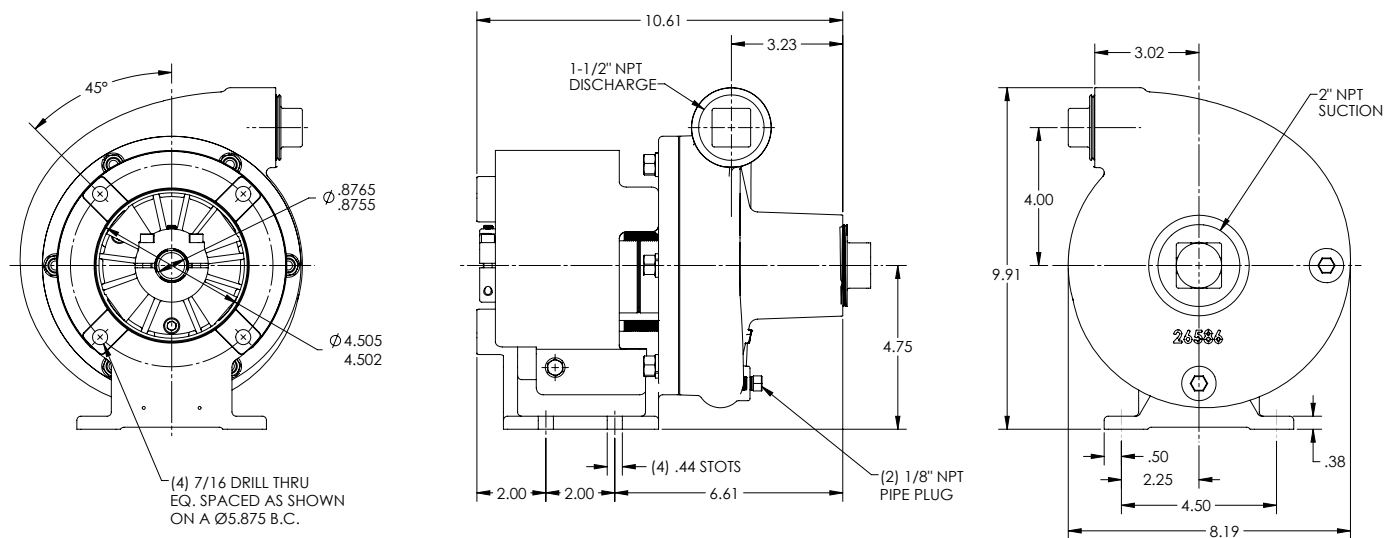


An Ingersoll Rand Business

HTO 120

DIMENSIONS

HTO120PPK D:CCMTR 7/8 145TC 5.96 HD (MP29809)



* For complete parts lists and troubleshooting guidance, please refer to the MP Pumps Installation Operation & Maintenance (IOM) Manual.



12500 South Pulaski Road
Alsip, IL 60803, USA
Phone (800) 563-8006